
IIS7&8 SSL Certificate Deployment Guide



沃通电子认证服务有限公司

WoSignCA Limited

Content

1. The environment for installing the SSL certificate.....	3
1.1 Brief introduction of SSL certificate installation environment	3
1.2 Network environment requirements	3
2. Import SSL certificate.....	4
2.1 Get SSL certificate.....	4
2.2 Import SSL certificate.....	4
2.3 Distribution server certificate	6
2.4 Test the SSL certificate.....	7
3. Install Secure signature.....	8
4. Backup of SSL certificate	8
5. Restore of SSL certificate	8

Contact information of technical support

Email of technical support: support@wosign.com

Hotline of technical support: 0755-26027828

Website of technical support: <https://bbs.wosign.com>

Company official website address: <https://www.wosign.com>

1. The environment for installing the SSL certificate

1.1 Brief introduction of SSL certificate installation environment

IIS8.0 operating system server

A website

SSL certificate (Note: this guide uses the OV SSL certificate which the domain name is s.wosign.com to operate, other version of the certificate are also common.)

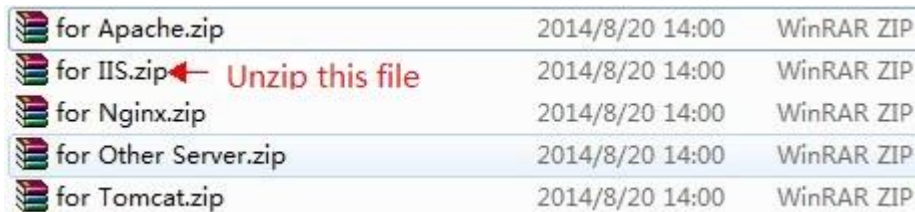
1.2 Network environment requirements

Please ensure the site is a legitimate e domain address, which can normal access by typing it's domain name http://XXX.

2. Import SSL certificate

2.1 Get SSL certificate

You will get a zip file with password after you apply the certificate from wosign successfully. You need to enter the password to extract the file, after extract the file you will get 5 files: **for Apache、for IIS、for Nginx、for Other Server, for tomcat. These are different formats for different servers.** After we extra the zip file from for IIS, we can get a certificate www.xxx.com.pfx. We need to use pfx format certificate on IIS8.0.



for Apache.zip	2014/8/20 14:00	WinRAR ZIP
for IIS.zip ← Unzip this file	2014/8/20 14:00	WinRAR ZIP
for Nginx.zip	2014/8/20 14:00	WinRAR ZIP
for Other Server.zip	2014/8/20 14:00	WinRAR ZIP
for Tomcat.zip	2014/8/20 14:00	WinRAR ZIP

Figure 1

2.2 Import SSL certificate

Start -> Run -> MMC, Start console -> Select menu file -> Add / remove management unit-> Select the certificate in the list->click“add”-> choose “Computer account” -> Click Finish。 On the left side of the console display certificate tree list, choose “Individual”- “certificate”, Right click, choose “All tasks -> Import”, According to the certificate Import Wizard, import the pfx format certificate to “Automatically select the storage area according to the certificate content”。 (Pay attention to enter the password in the process.) After you import certificate successfully, you can see the certificate information as shown in Figure2.

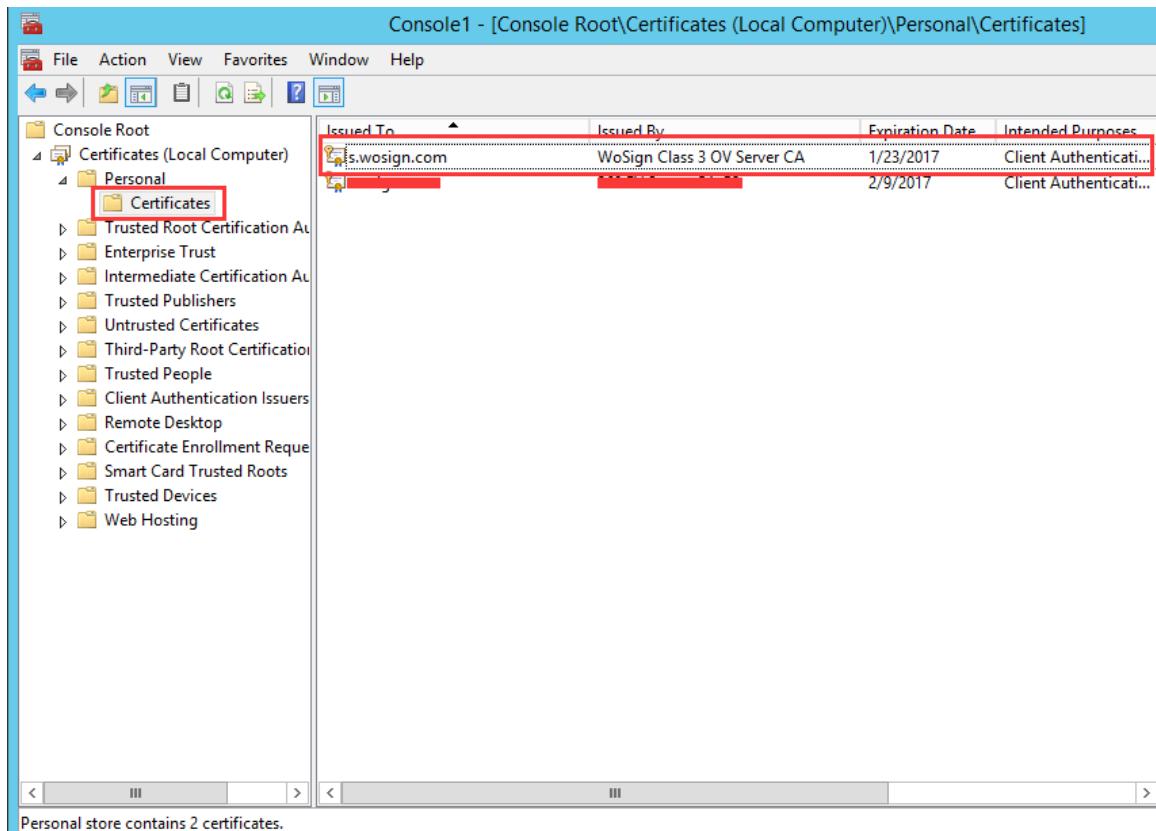
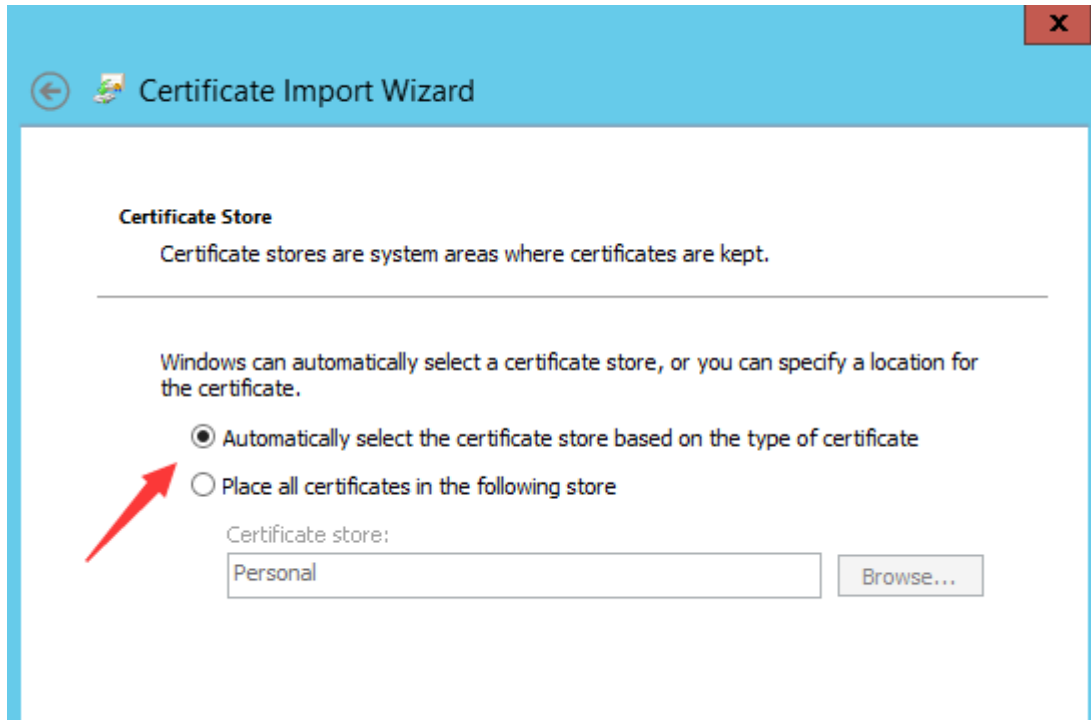


Figure 2

2.3 Distribution server certificate

Open the IIS8.0 manager panel, find the site to be deployed certificate, click on the "binding" as shown in Figure 3

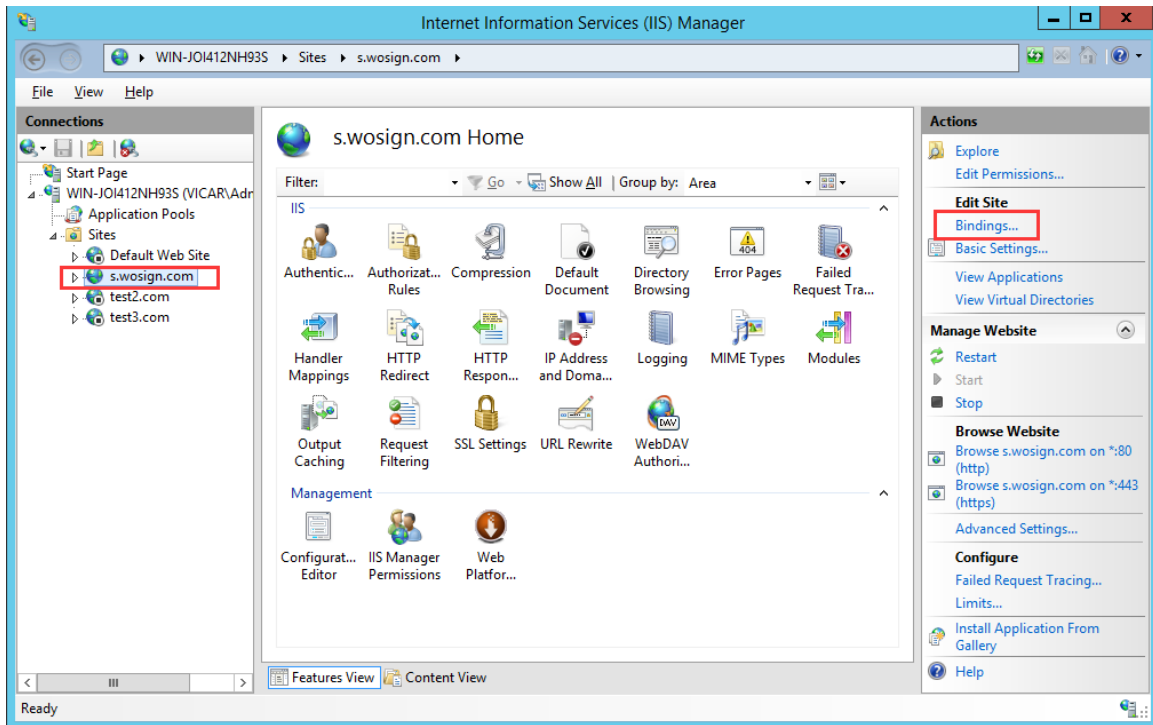


Figure 3

Setting parameters

Select “binding” -> “add” -> “Type selection HTTPS” -> “Port 443” -> “SSL certificate 【the name of the imported certificate】” ->“Determine”, SSL default port 443 port, (Please don't make any changes. If you use other ports such as: 8443, you must enter the <https://www.domain.com:8443>). Seen as figure 4.

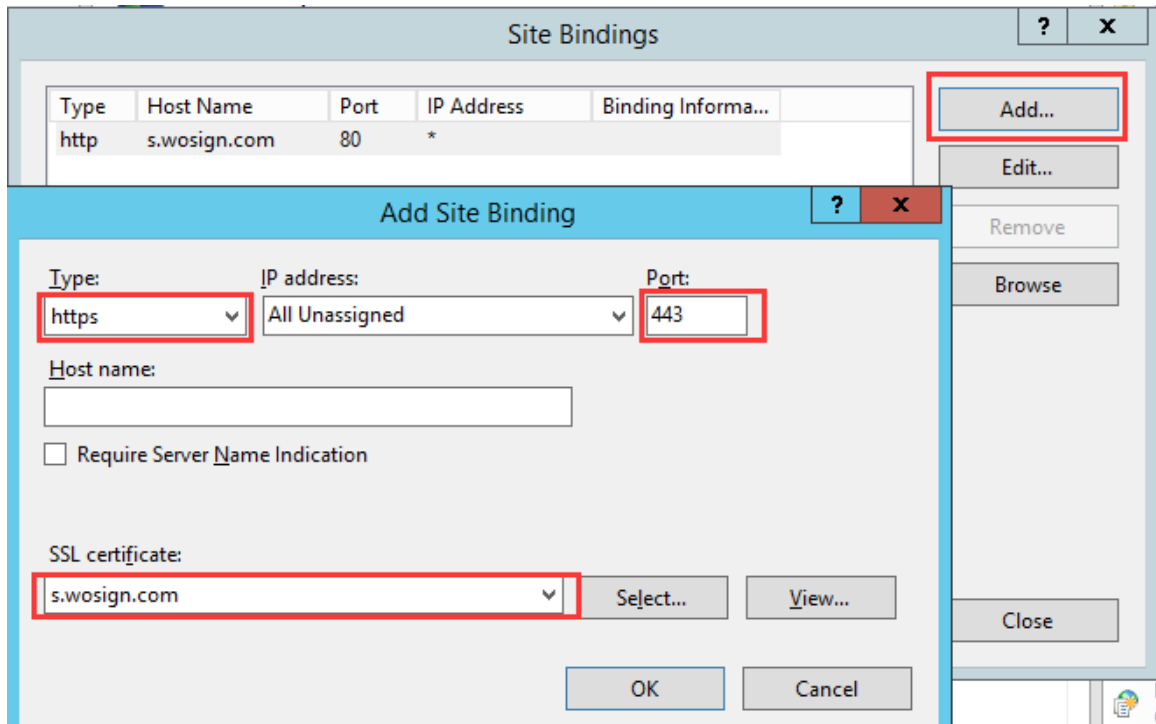


Figure 4

2.4 Test the SSL certificate.

Input the address in browser address bar: `https://s.wosign.com` (the domain of the applied SSL certificate) Test your SSL certificate is installed successfully or not. If successful, the browser address bar will display a safety lock sign. Please notice: if there is unsafe content in your web site, it will show "Do you want to show the content that is not secure". Please modify your website delete the unsafe content (like Flash、CSS、Java Script, picture and so on).

3. Install Secure signature

(Secure signature only works on OV and EV SSL certificate now)

After you purchased the SSL WoSign certificate, you can get a trusted website security certification logo which shows your company's certificate information freely. It can greatly enhance the user's online trust, to facilitate more online transactions. So we suggest you to add the following code which can dynamically display the trusted site security certification logo on your homepage or other page.

If you want display the certificate logo on English website, add the code on the English web page below:

```
<SCRIPT LANGUAGE="JavaScript" TYPE="text/javascript" SRC="https://seal.wosign.com/tws-en.js"></SCRIPT>
```



4. Backup of SSL certificate

Please save the file and password you receive.

5. Restore of SSL certificate

Repeat 2.2 operation.